

**600x
1200mm**

FULLBODY
TILES

“Discover The Exquisite Symphony of Colors!”

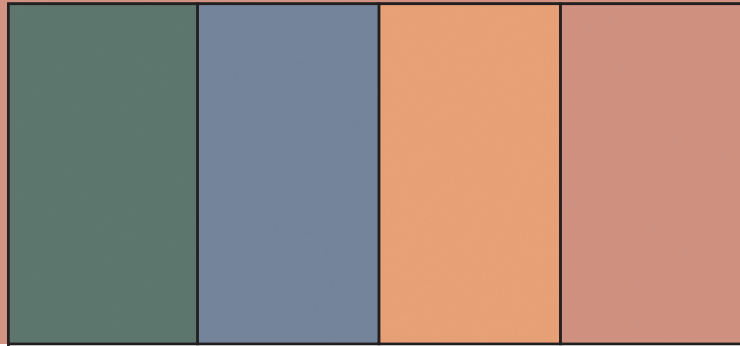




600x1200mm | Matt Finish
Fullbody Tiles



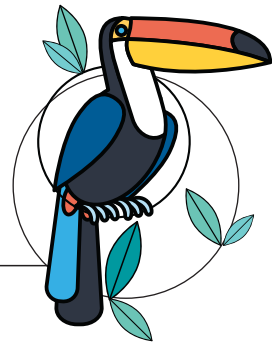
BRAZIL



INTRODUCING
RARE & UNIQUE PLUS
4 DIFFERENT
COLORS

**600x
1200mm**

Dive deep inside the heart of art and enhance your spaces to create a seamless visual feast with our heart-warming collection of full-body matt tiles in four colors and the convenient size of 600x1200mm that will give your spaces a breath of life.



Let the melody of soft colors flow from your spaces



**600x
1200mm**

**MATT
FINISH**

**FULLBODY
TILES**

Advantages



ZERO
MAINTENANCE



LOW WATER
ABSORPTION



IMPACT
RESISTANCE



HIGH
STRENGTH

Application Areas



KITCHENS



INTERIOR



BATHROOM



GYM



RESIDENTIAL



COMMERCIAL



HOSPITALS



URBAN
CENTERS

“
Exceptional Surfaces
Multifarious Application
Possibilities!



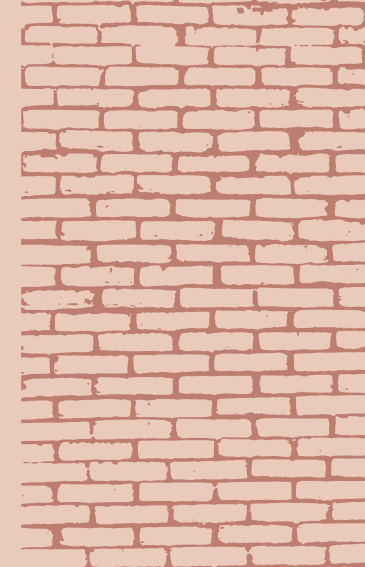


PREVIEW OF :
Brick Matt, 600x1200mm



BRICK MATT

600x
1200mm
—
Matt Finish



BRICK



ZERO
MAINTENANCE



LOW WATER
ABSORPTION



IMPACT
RESISTANCE



HIGH
STRENGTH



PREVIEW OF :
Leaf Matt, 600x1200mm



LEAF MATT

600x
1200mm
—
Matt Finish



LEAF



ZERO
MAINTENANCE



LOW WATER
ABSORPTION



IMPACT
RESISTANCE



HIGH
STRENGTH

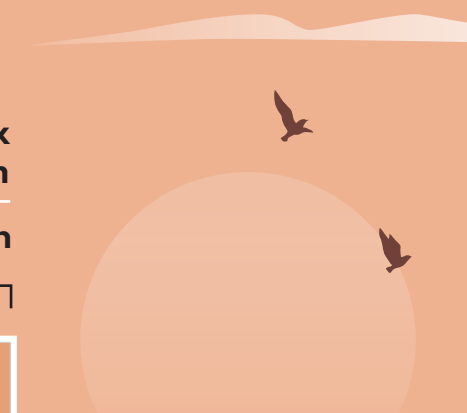


PREVIEW OF :
Sunset Matt, 600x1200mm



SUNSET MATT

600x
1200mm
—
Matt Finish



SUNSET



ZERO
MAINTENANCE



LOW WATER
ABSORPTION



IMPACT
RESISTANCE



HIGH
STRENGTH



PREVIEW OF :
Windsor Matt, 600x1200mm



WINDSOR MATT

600x
1200mm
Matt Finish



WINDSOR

 [ZERO
MAINTENANCE

 [LOW WATER
ABSORPTION

 [IMPACT
RESISTANCE

 [HIGH
STRENGTH

TECHNICAL SPECIFICATION

TECHNICAL DETAILS	STANDARD AS PER ISO-13006/EN176 GROUP BIa	MEAN VALUE OF OUR FULL BODY VITRIFIED TILES	METHOD OF TEST
Deviation In Length & Width	± 0.60%	± 0.10%	ISO-10545-2
Deviation In Thickness	± 5.00%	± 2.00%	ISO-10545-2
Straightness Of Sides	± 0.50%	± 0.10%	ISO-10545-2
Rectangularity	± 0.60%	± 0.10%	ISO-10545-2
Surface Flatness	± 0.50%	± 0.10%	ISO-10545-2
Glossiness	Gloss Meter	Min. 90%	Glossometer
Water Absorption	≤ 0.50%	E ≤ 0.05%	ISO-10545-3
Breaking Strength	1300 N	2000 N	ISO-10545-4
Abrasion Resistance	Max. 175mm	Max. 145mm ³	ISO-10545-6
Moh's Hardness	Min. 6	≥ 6*	EN101
Frost Resistance	Frost Proof	Frost Proof	ISO-10545-12
Thermal Shock	No Damage	No Damage	ISO-10545-9
Moisture Expansion	Nil	Nil	ISO-10545-10
Thermal Expansion	< 9 x 10 ⁻⁶	< 6 x 10 ⁻⁶	ISO-10545-8
Resistance of House Hold Chemical	No Damage	No Damage*	ISO-10545-13
Stain Resistance	Resistance	Resistance*	ISO-10545-14
Slip Resistance(friction Co Efficient)	> 0.40	> 0.40	ISO-10545-17

PACKING DETAIL

Size	Thickness (approx.)	Pcs. / Box	Weight / Box (approx.) Matt	Coverage Area / Box
600x1200mm	9.3 to 9.8mm(±0.2)	2 pcs	31.0 kg	15.5 ft ² or 1.44 mtr ²